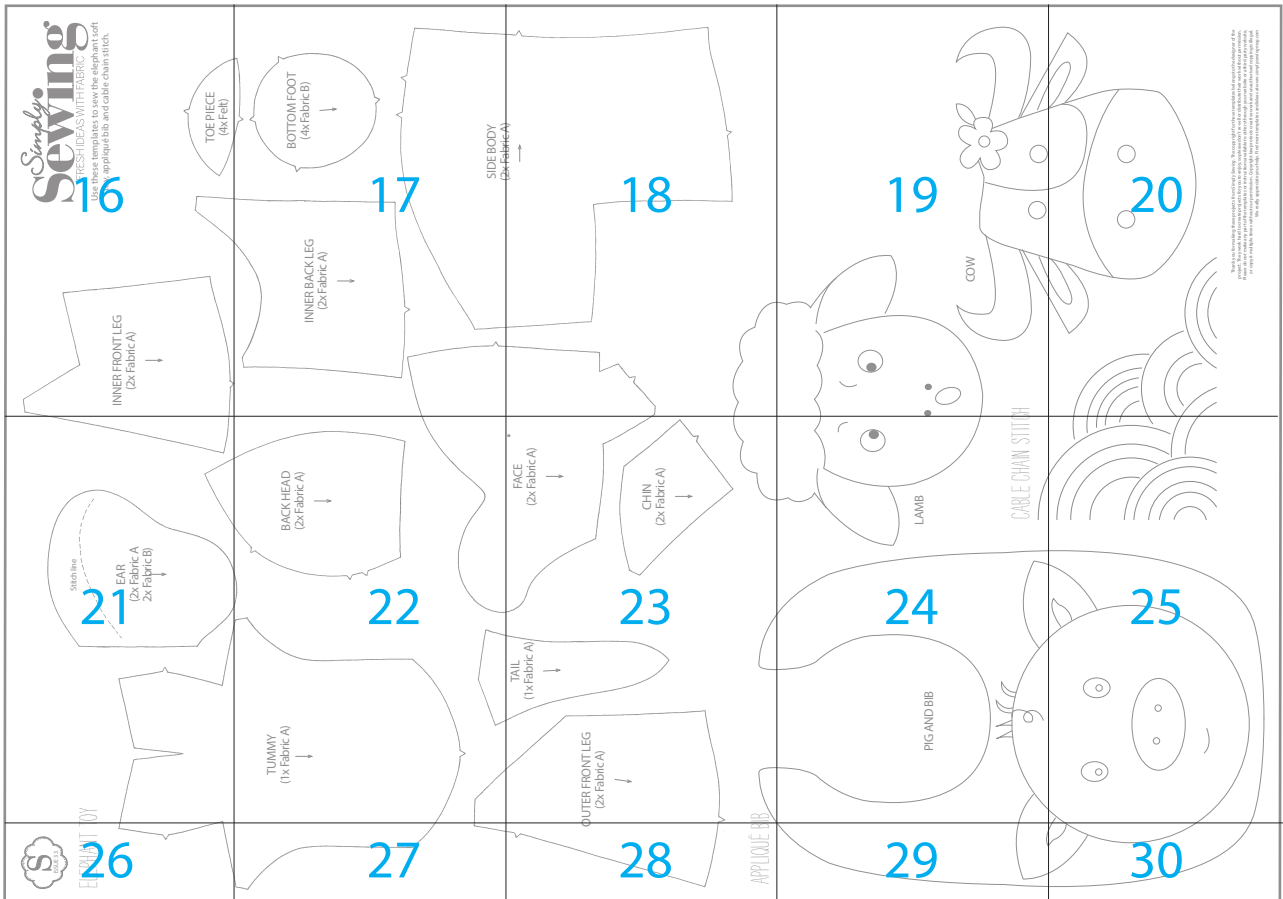
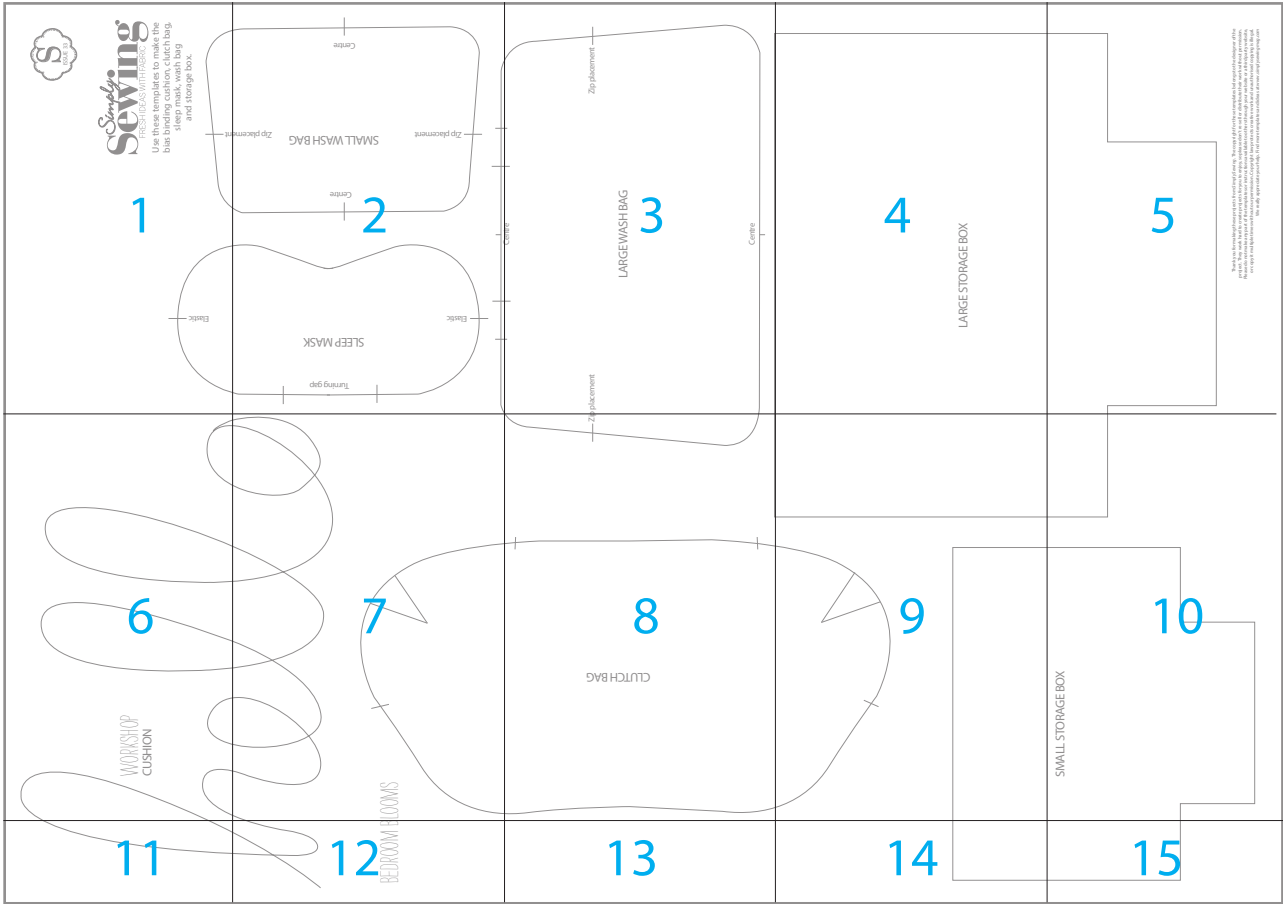


# Simply Sewing

FRESH IDEAS WITH FABRIC

## HOW TO PRINT THIS PATTERN

Print out this 30-page PDF on to A4 paper. Trim away the shaded border from each page and position the pages as below to assemble the pattern...



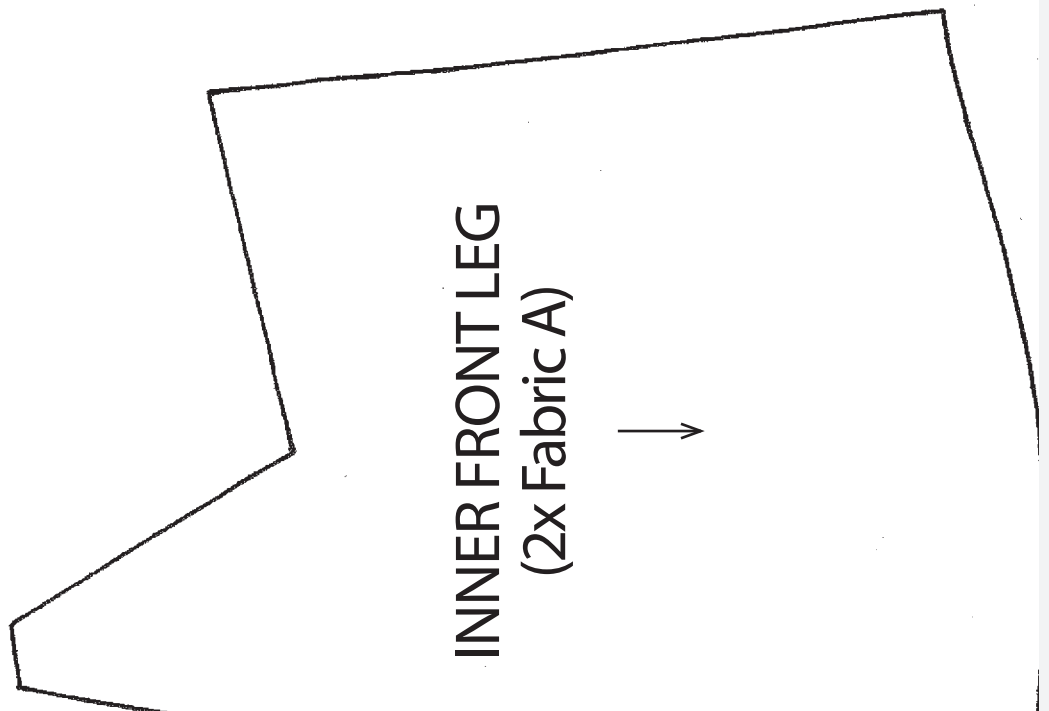
Copyright © 2014 Simply Sewing Ltd. All rights reserved. This pattern is for personal use only. It may not be reproduced, stored in a retrieval system, or transmitted in any form or by any means, electronic, mechanical, photocopying, recording, or by any information storage and retrieval system. For more information, please visit our website at [www.simplysewing.com](http://www.simplysewing.com).

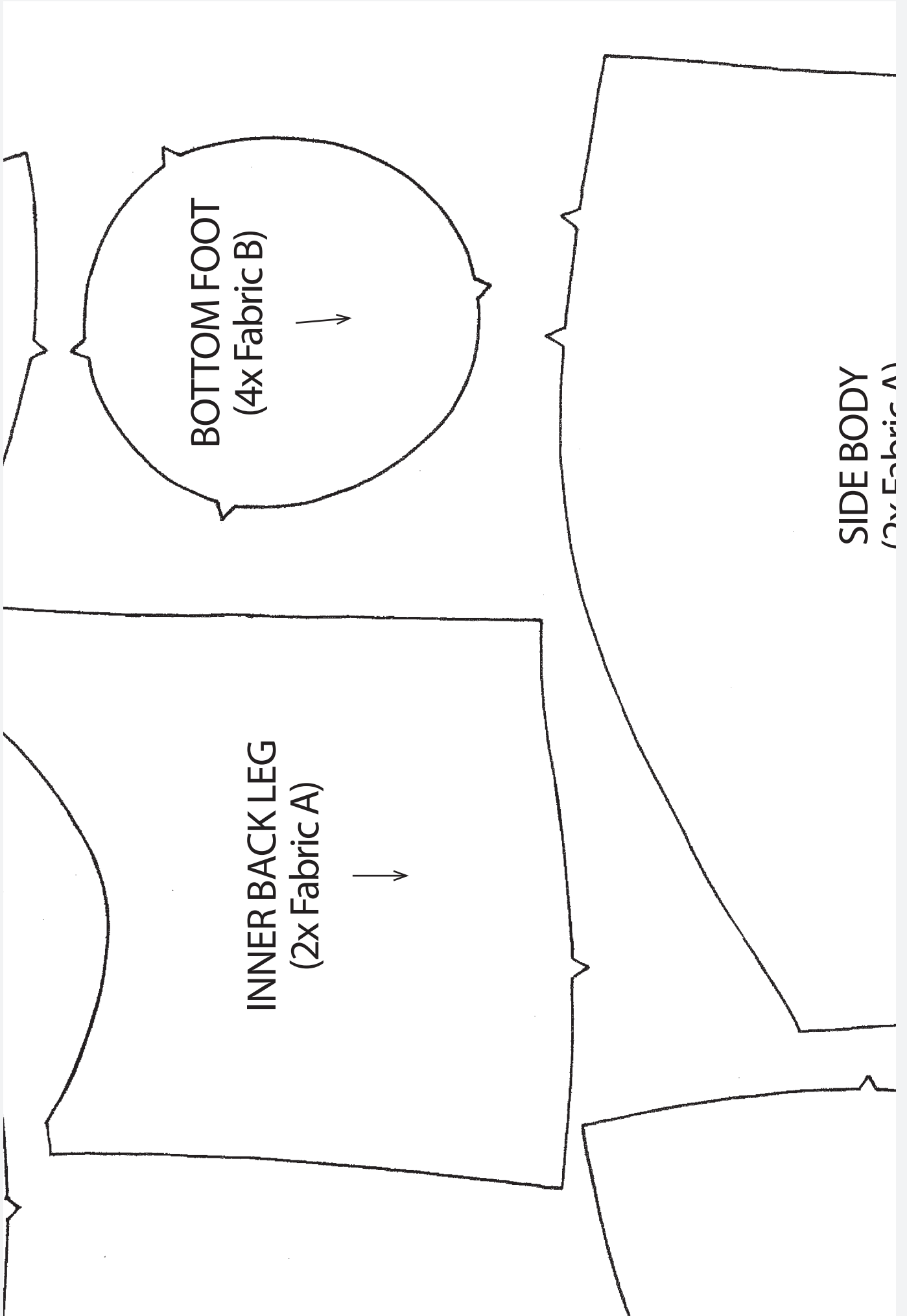
Copyright © 2014 Simply Sewing Ltd. All rights reserved. This pattern is for personal use only. It may not be reproduced, stored in a retrieval system, or transmitted in any form or by any means, electronic, mechanical, photocopying, recording, or by any information storage and retrieval system. For more information, please visit our website at [www.simplysewing.com](http://www.simplysewing.com).

# Simply. **SEWING**

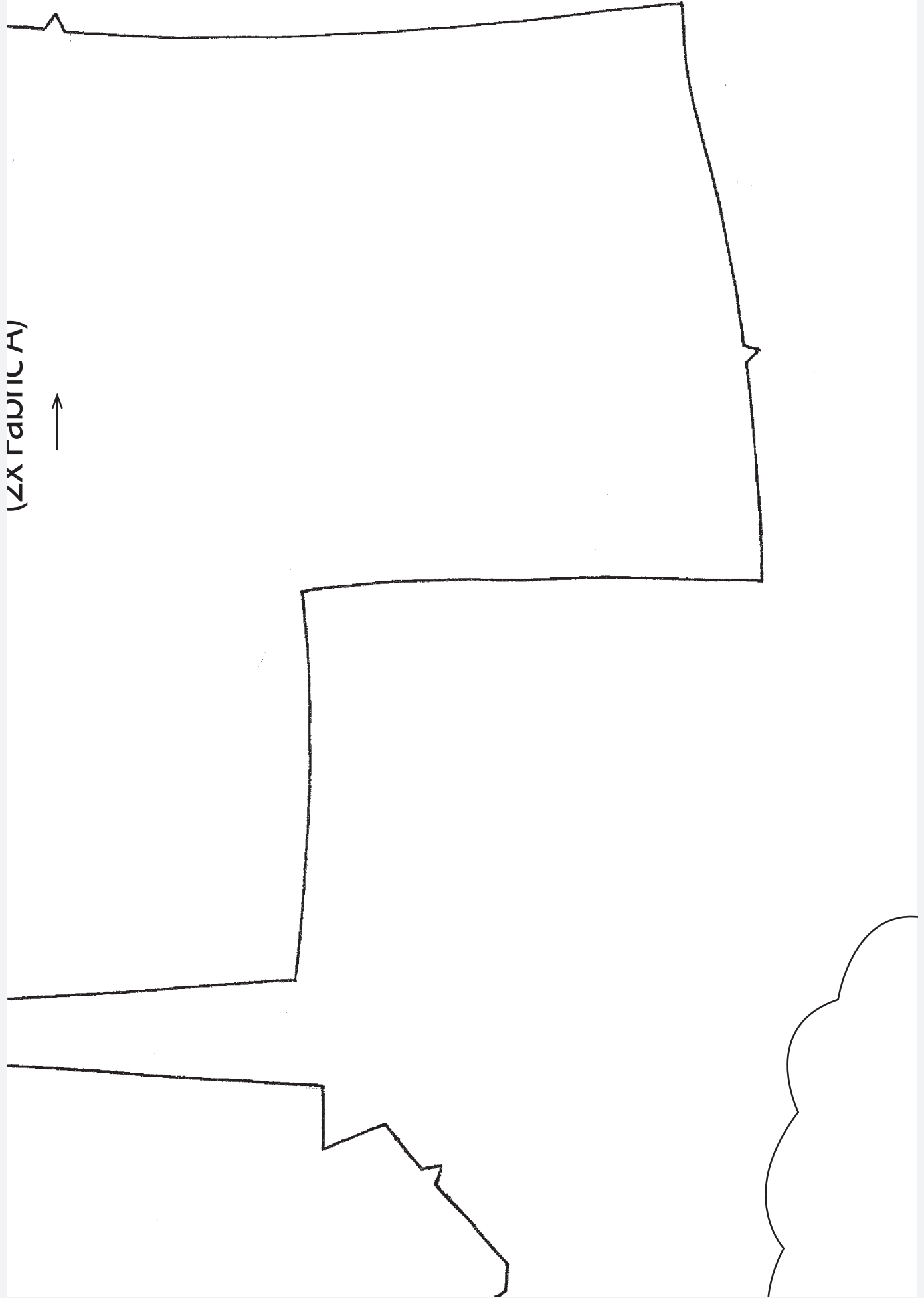
FRESH IDEAS WITH FABRIC

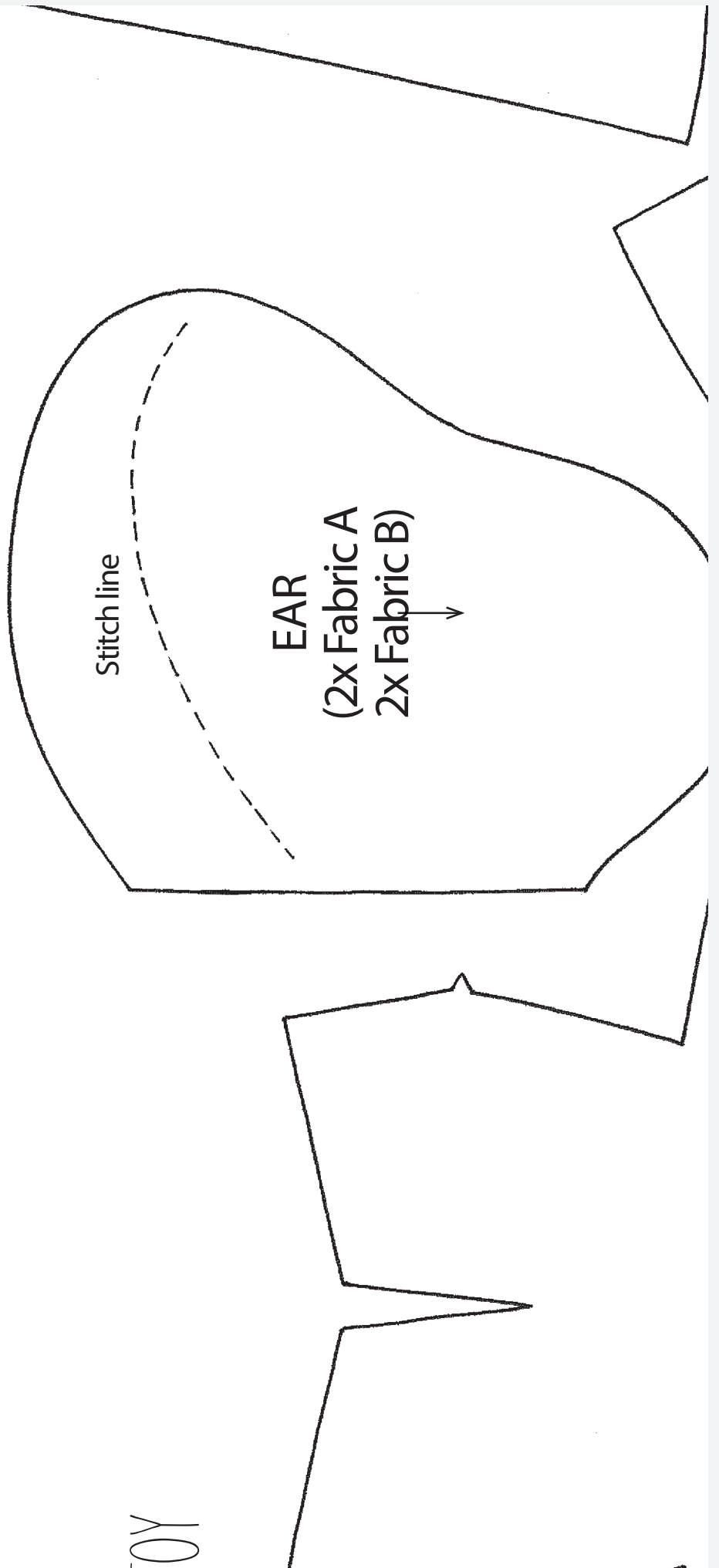
Use these templates to sew the elephant soft toy, appliqué bib and cable chain stitch.





(ΣΧ ΓΑΒΟΥΙΣ Α)



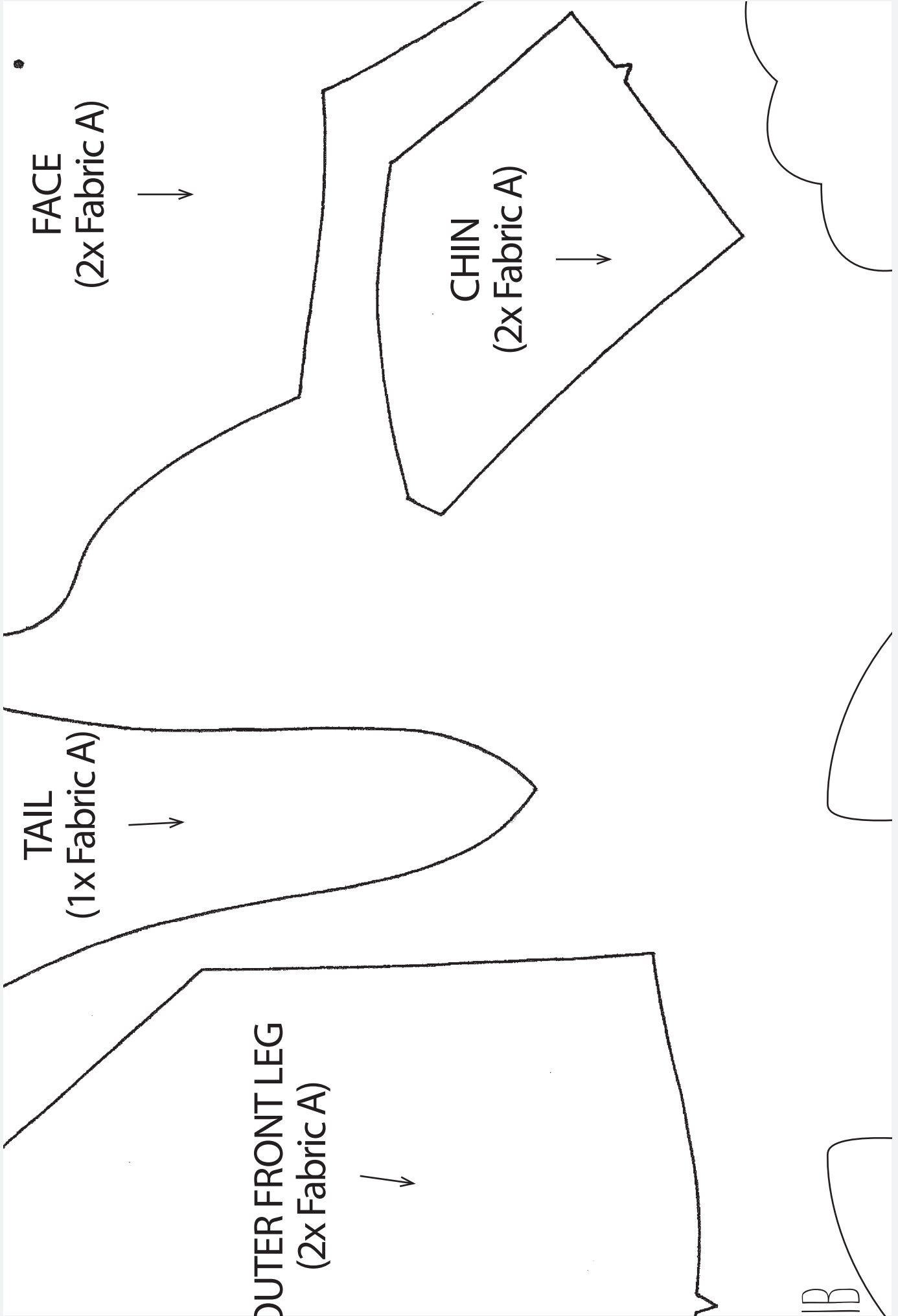


**BACK HEAD**  
**(2x Fabric A)**



**TUMMY**  
**(1x Fabric A)**





FACE  
(2x Fabric A)



CHIN  
(2x Fabric A)



TAIL  
(1x Fabric A)



OUTER FRONT LEG  
(2x Fabric A)



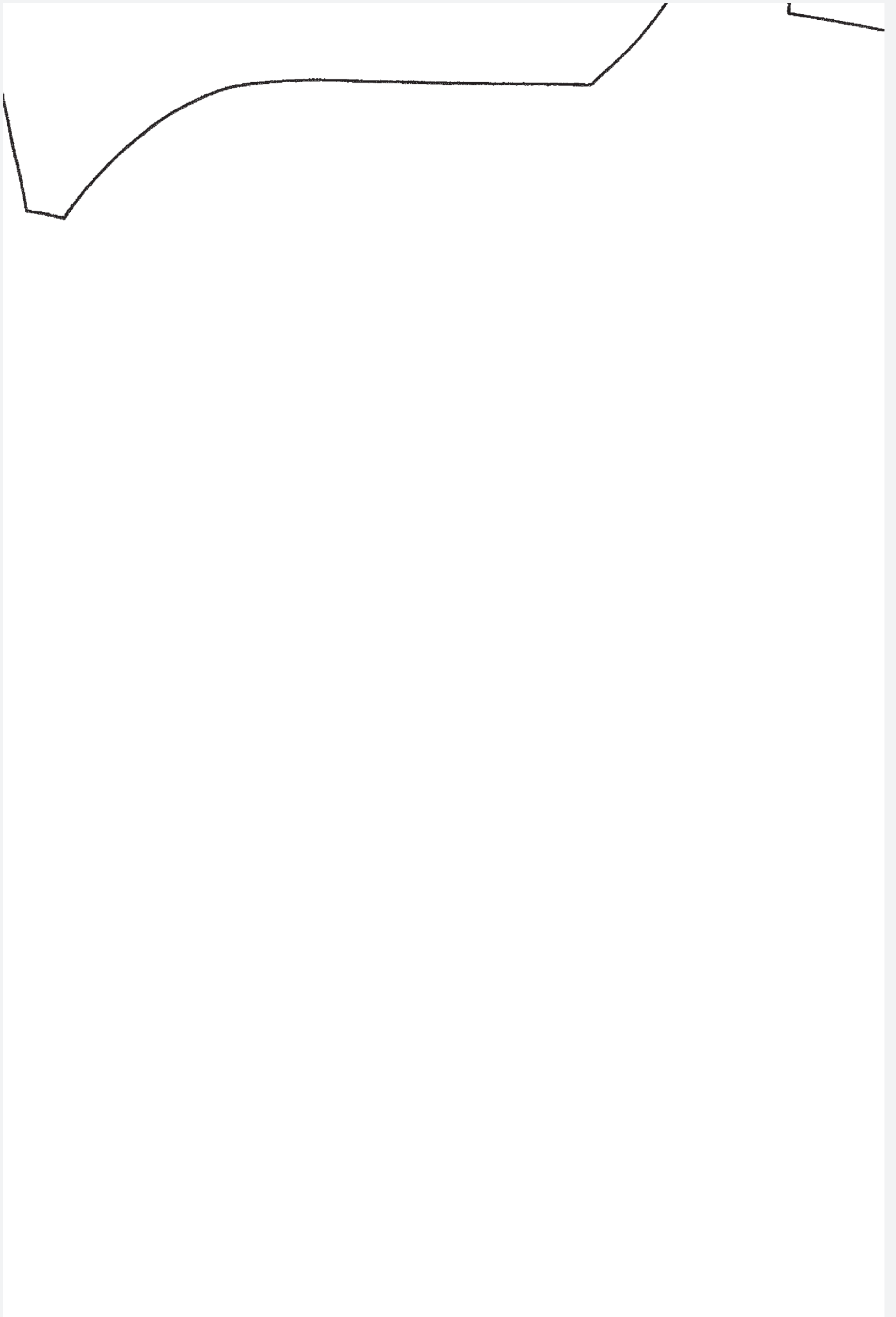
IB



ELEPHANT T







APPLIQUÉ B

