

# Simply Sewing

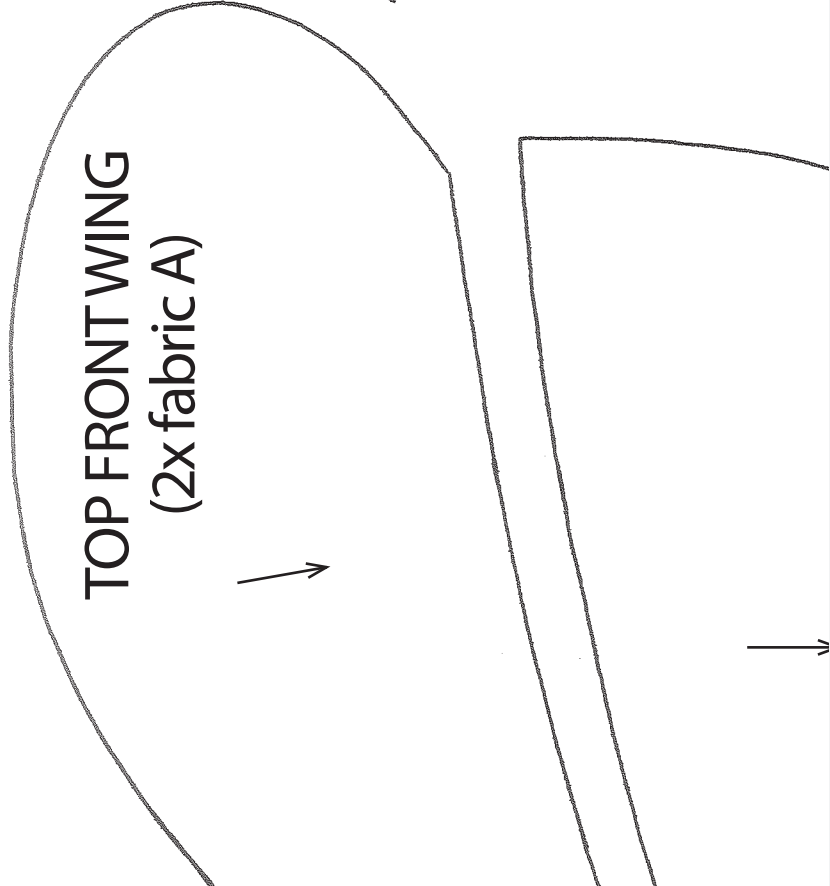
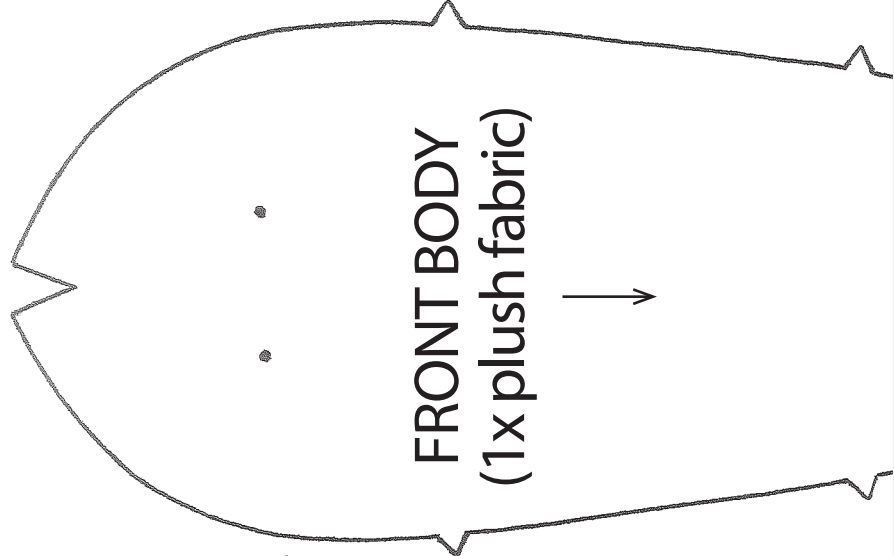
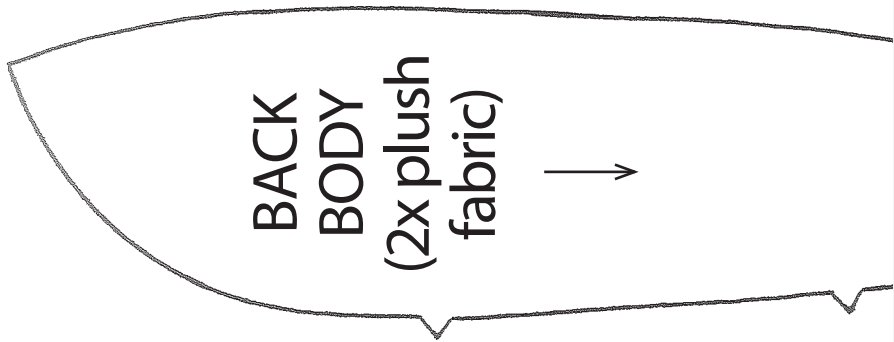
FRESH IDEAS WITH FABRIC

## HOW TO PRINT THIS PATTERN

Print out this 30-page PDF on to A4 paper. Trim away the shaded border from each page and position the pages as below to assemble the pattern...

Grid of pattern pieces 1-15. Piece 1: Neckband (2x fabric A). Piece 2: Flower Dress (Fabric D, Front Skirt Part 2, Cut On Fold). Piece 3: Flower Dress (Fabric D, Back Skirt Part 2, Cut Fabric). Piece 4: Flower Dress (Fabric D, Back Skirt Part 2, Cut Fabric). Piece 5: Flower Dress (Fabric D, Back Skirt Part 2, Cut Fabric). Piece 6: Flower Dress (Fabric D, Back Skirt Part 2, Cut Fabric). Piece 7: Flower Dress (Fabric D, Back Skirt Part 2, Cut Fabric). Piece 8: Flower Dress (Fabric D, Back Skirt Part 2, Cut Fabric). Piece 9: Flower Dress (Fabric D, Back Skirt Part 2, Cut Fabric). Piece 10: Flower Dress (Fabric D, Back Skirt Part 2, Cut Fabric). Piece 11: Flower Dress (Fabric D, Back Skirt Part 2, Cut Fabric). Piece 12: Flower Dress (Fabric D, Back Skirt Part 2, Cut Fabric). Piece 13: Flower Dress (Fabric D, Back Skirt Part 2, Cut Fabric). Piece 14: Flower Dress (Fabric D, Back Skirt Part 2, Cut Fabric). Piece 15: Flower Dress (Fabric D, Back Skirt Part 2, Cut Fabric).

Grid of pattern pieces 16-30. Piece 16: Summer Bag and garment bag template. Piece 17: Summer Bag and garment bag template. Piece 18: Garment Bag (Match pattern pieces along dashed lines). Piece 19: Bag Top. Piece 20: Bag Top. Piece 21: Top Front Wing (2x fabric A). Piece 22: Back Wing (2x fabric D). Piece 23: Bag Bottom. Piece 24: Bag Top. Piece 25: Bag Top. Piece 26: Top Front Wing (2x fabric A). Piece 27: Middle Front Wing (2x fabric B) and Bottom Front Wing (2x fabric C). Piece 28: Summer Bag (Cut on fold). Piece 29: Bag Top (Cut on fold). Piece 30: Bag Top (Cut on fold).



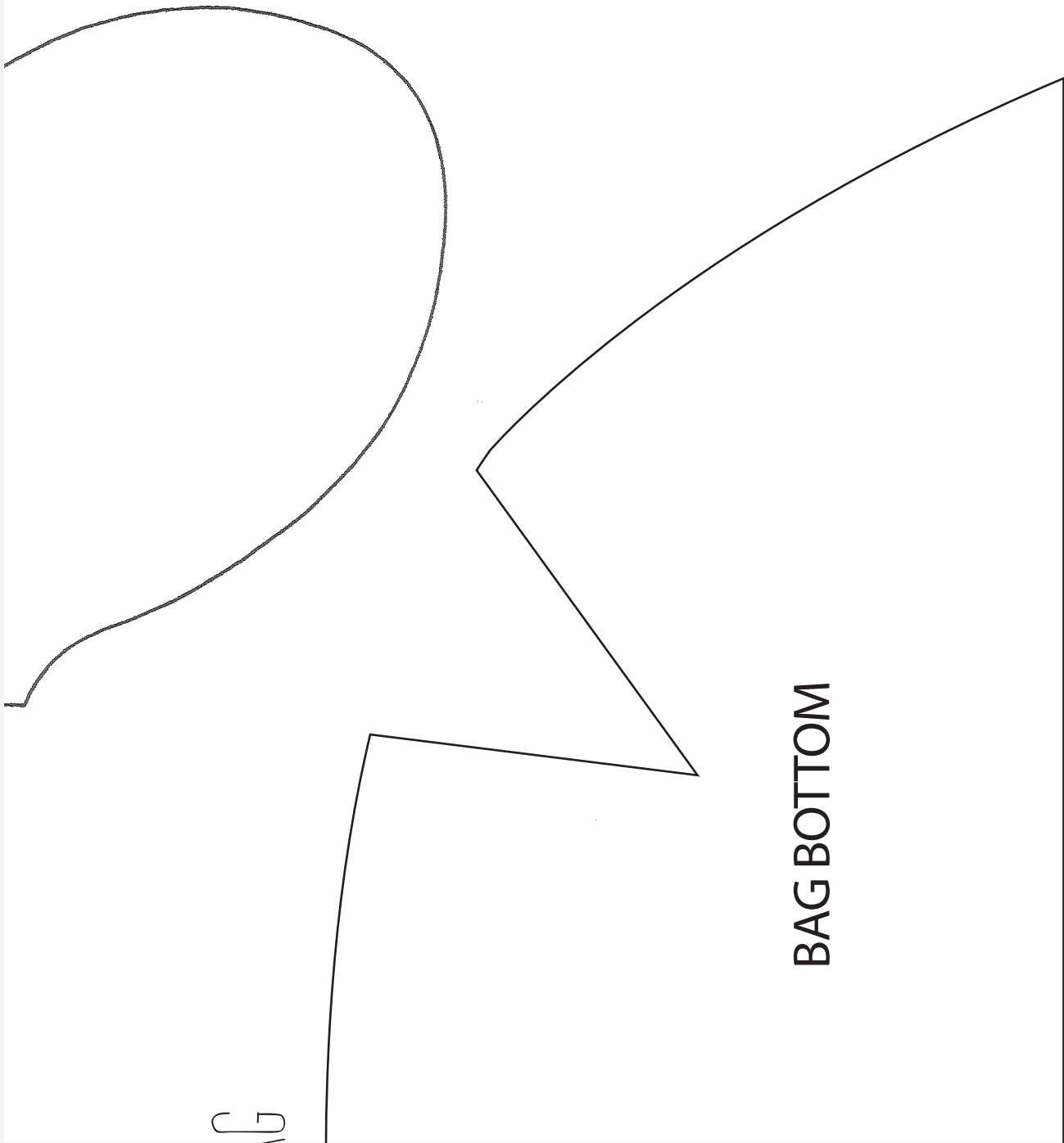
MIDDLE FRONT WING  
(2x fabric B)

FRONT WING  
fabric C

BACK WING  
(2x fabric D)



Cut on fold

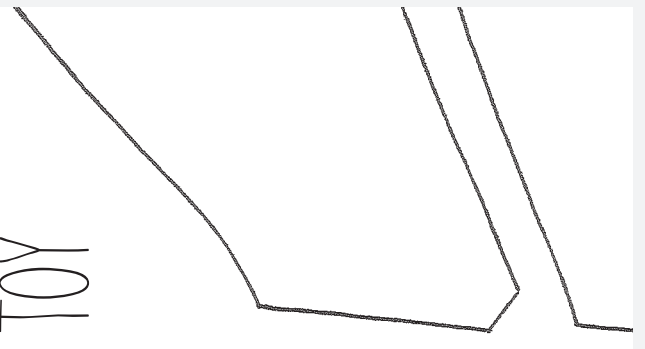


**BAG BOTTOM**

G



# BUTTERFLY TOY



A

BOTTOM F  
(2x fabric)