

## Episode 2: A Blockbuster Battle, Part 2

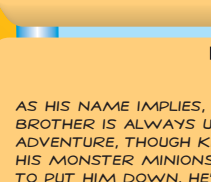
### Kirby

THE WARPSTAR KNIGHT-IN-TRAINING ACCIDENTALLY ENDS UP AS THE PINK PROTECTOR OF CAPPY TOWN. THOUGH HE SEEMS HARMLESS, KIRBY HAS THE AMAZING ABILITY TO BLOW AWAY THE COMPETITION BY INHALING HIS ENEMIES' ATTACKS AND SENDING THEM RIGHT BACK AT 'EM.



### Tiff

THE DAUGHTER OF SIR EBRUM AND LADY LIKE IS KIRBY'S BIGGEST BOOSTER. SHE TRIES HER BEST TO PROTECT AND DEFEND HER PINK PAL FROM THE MONSTERS UNLEASHED BY KING DEDEDE. BUT SHE DOES GET FRUSTRATED WITH KIRBY'S BAD HABIT OF INHALING EVERYTHING IN SIGHT.



### Tuff

AS HIS NAME IMPLIES, TIFF'S YOUNGER BROTHER IS ALWAYS UP FOR AN ADVENTURE, THOUGH KING DEDEDE AND HIS MONSTER MINIONS DO THEIR BEST TO PUT HIM DOWN. HE'S ALMOST AS FAST AND FEISTY AS HIS SISTER.



### King Dedede

THE ROWDY RULER OF DREAM LAND IS A BIG-MOUTHED BUFFOON WITH A KING-SIZED PROBLEM AND PINT-SIZED BRAIN. AS FAR AS HIS SUBJECTS ARE CONCERNED, DEDEDE'S A ZERO AND KIRBY'S A HERO. SO THE BAD GUY'S GOAL IS TO GET RID OF KIRBY--FOR GOOD!



### Escargoon

THIS SNARLY SNAIL IS KING DEDEDE'S SURLY SIDEKICK. HE TAKES ALMOST AS MUCH ABUSE AS HE DISHES OUT. HE'S INSULTED AND INSULTING, A RARE COMBINATION OF SELFISHNESS, PETTINESS AND SURLINESS THAT ONE RARELY SEES IN HENCHMEN ANY MORE.



### Meta Knight

META KNIGHT IS THE SPHERICAL SWORDSMAN WHO'S SHEATHED IN ARMOR AND CLOAKED IN MYSTERY. IS HE FRIEND OR FOE? IT'S HARD TO SAY, BUT META KNIGHT KNOWS MORE THAN HE'S SAYING...AND HIS CONNECTION TO KIRBY HOLDS THE KEY TO THE RIDDLE OF NIGHT MARE ENTERPRISES.



### N.M.E. Sales Guy

YOU WANT MONSTERS? HE'S GOT MONSTERS! A SUPER-SLICK SALESMAN, THIS MAN IN THE MONITOR WEARS SHADES 24/7...MAYBE TO HIDE HIS EVIL INTENTIONS. KING DEDEDE IS HIS #1 CHUMP...I MEAN, CUSTOMER.



### FoLolo & FaLala

THESE BUSY BODYGUARDS BUZZ AROUND IN THE BACKGROUND AS TIFF AND TUFF FIGHT TO KEEP KIRBY SAFE. THEY'RE QUITE THE PAIR--YA CAN'T HAVE ONE WITHOUT THE OTHER.



# Kirby

## Right Back at Ya!



KIRBY: RIGHT BACK AT YA! AIRS SATURDAY MORNINGS ON **FOX**

KIRBY'S GOT A HEAVY PROBLEM--HE'S UP AGAINST ANOTHER OF KING DEDEDE'S MONSTERS, THIS TIME A MASSIVE STONE SUMO WRESTLER NAMED BLOCKY. WILL KIRBY TAKE A CHIP OFF THE OL' BLOCKY? OR IS HE ABOUT TO BE ROCKED?

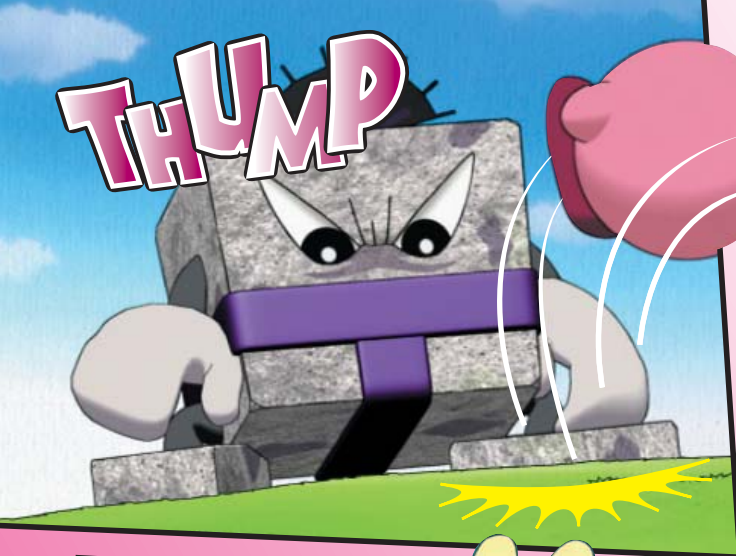








THUMP



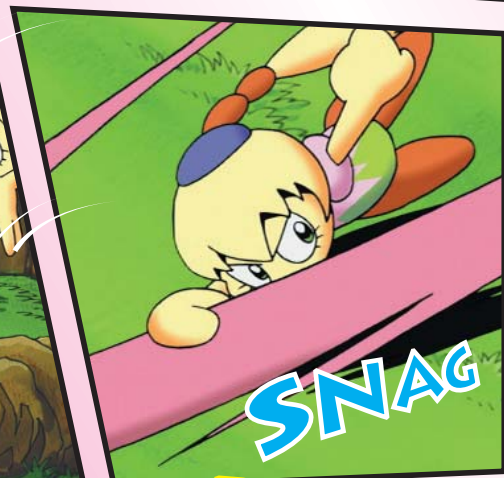
BOUNCE



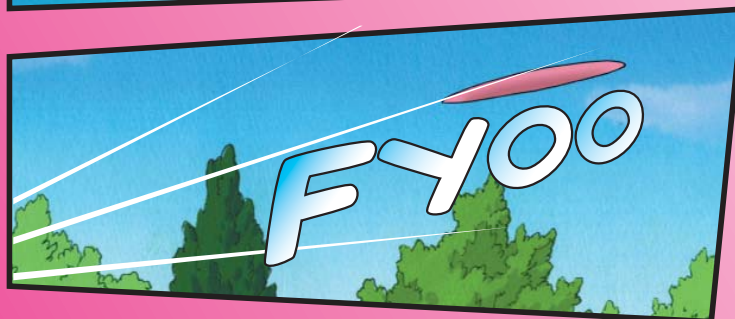
WHAM



KIRBY!



SNAG



F400



POW

I ALREADY TOLD Y' THIS IS MY NEST! NOW GET YOUR BIG, PINK PUSS OUTTA HERE!

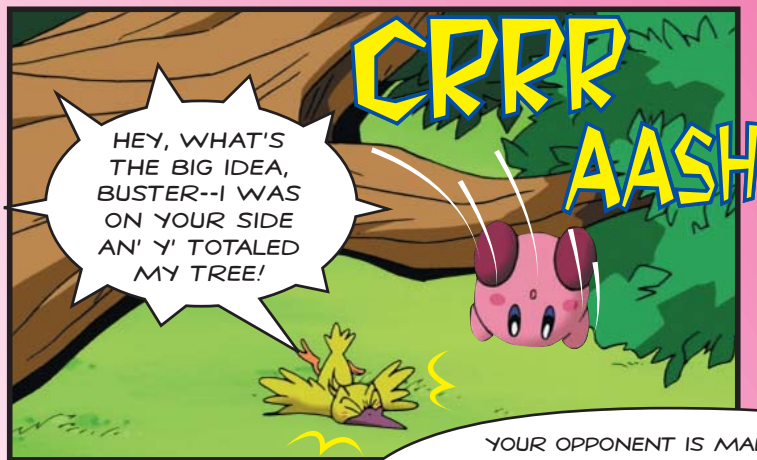


IT'S TIME FOR YOU T' MAKE LIKE A TREE AN' LEAVE!



BOOSH

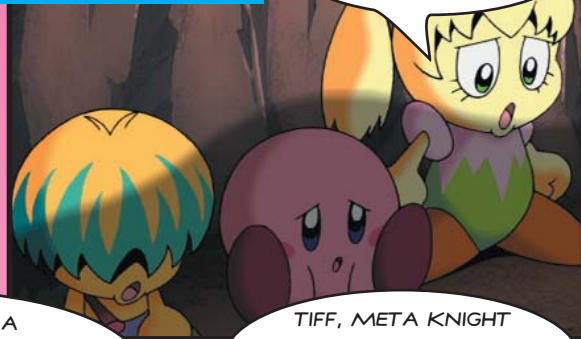




HEY, WHAT'S THE BIG IDEA, BUSTER--I WAS ON YOUR SIDE AN' Y' TOTALED MY TREE!

MOMENTS LATER, AS KIRBY AND FRIENDS HIDE FROM BLOCKY . . .

I WONDER WHY KIRBY COULDN'T BEAT THAT BLOCK.



TIFF, META KNIGHT WORKS FOR KING DEDEDE-- WHAT'S HE WANNA HELP KIRBY FOR?



I CAN TELL YOU WHY.

SIR META KNIGHT!

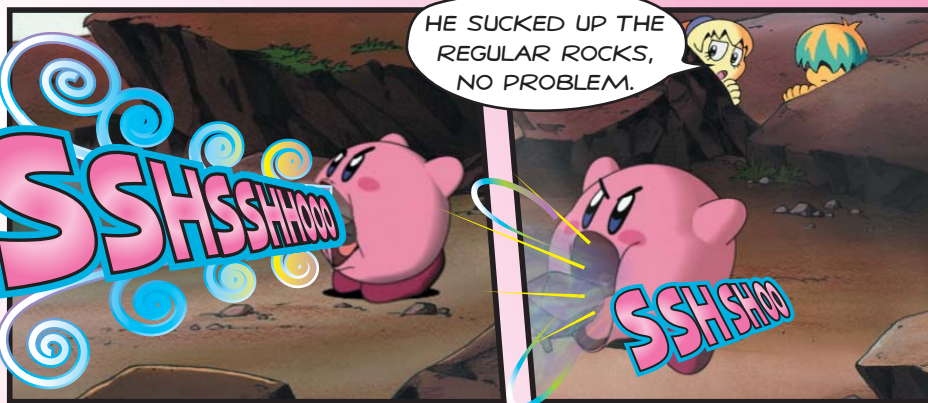
YOUR OPPONENT IS MADE OF A SUPER HIGH-DENSITY MATTER. BUT IF YOU CAN FIND A WAY TO TAKE YOUR OPPONENT'S STRENGTH AND TURN IT AGAINST HIM, KIRBY CAN TRIUMPH.



SUPER HIGH-DENSITY? WHAT'S THAT MEAN?



WE CAN FIGURE THAT OUT LATER, TUFF, BUT RIGHT NOW, WE'VE GOTTA GET KIRBY IN SHAPE FOR A REMATCH!



HE SUCKED UP THE REGULAR ROCKS, NO PROBLEM.



KIRBY--TRY THAT BIG ONE DOWN THERE!



IT'S NOT LOOKING GOOD . . .

EVEN FOR KIRBY, IT'S IMPOSSIBLE TO SUCK THOSE ALL THE WAY UP HERE.



HOLD ON--WHAT IF WE WENT THE OPPOSITE WAY?

THUMP